

天安新材全资控股
股票代码：603725.SH

HPL 耐火板 · 浙江瑞欣 REXIN



HI-CLEAN (AFP) PRO

可丽欣板

A Carefree and Joyful Modern Life Experience



contents

01 Product Introduction

02 Product Features

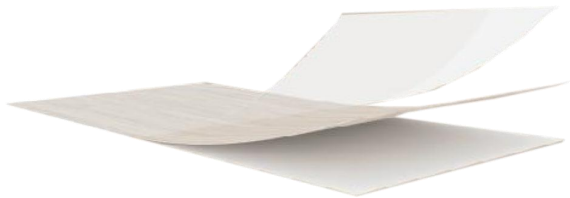
03 Technical Specifications

04 Annual New Colors

05 Maintenance

06 Product Pairing & Applications

PRODUCT INTRODUCTION



HI-CLEAN (AFP) PRO

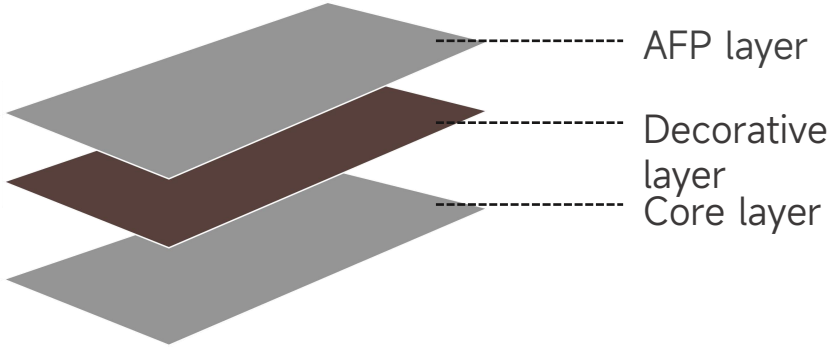
Zero Trace Pure Embrace

Tech-powered high-performance smart material with self-healing surface for minor scratches. Ideal for kitchens, bathrooms, furniture, healthcare, hotels, offices, and more. Elevate every space with refined durability.



PRODUCT INTRODUCTION

Product Structure



Product Specification

Size: 1220*2440MM

Thickness: 1MM



PRODUCT FEATURES

Five major product advantages ensure quality first



Anti-fingerprint

The AFP HPL features a nano-level oleophobic and hydrophobic coating that reduces surface energy to effectively block adhesion of contaminants such as sebum and sweat. Light stains can be wiped away with a damp cloth without chemical cleaners, saving time and effort.



Moisture, water, stain-resistant

Through a bionic "lotus leaf effect" treatment, a dense hydrophobic layer is formed, causing water droplets to roll off instantly upon contact and preventing penetration.



Self-healing

The surface utilizes polymer resin-elastomer composite technology with micro-scratch repair functionality. Minor scratches ($\leq 20\mu\text{m}$) are automatically filled and smoothed under room temperature or mild heat, restoring the original finish.



Skin-friendly texture

A matte finishing process creates a warm, silky-smooth texture comparable to infant skin or fine silk.



Eco friendly

Compliant with E1 formaldehyde emission standards, the material is non-toxic and harmless, safeguarding the health of users and families.

PRODUCT FEATURES

SOFT TOUCH



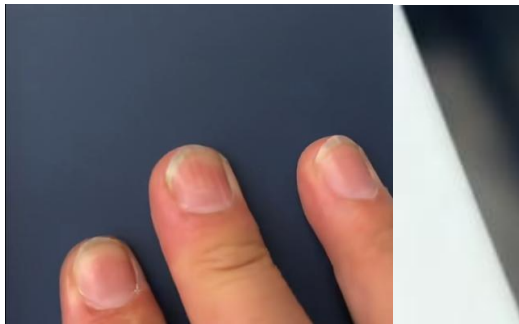
STAIN-RESISTANT



ANTI BACTERIAL



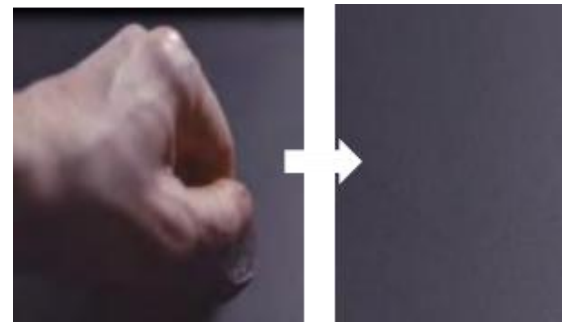
ANTI FINGERPRINT



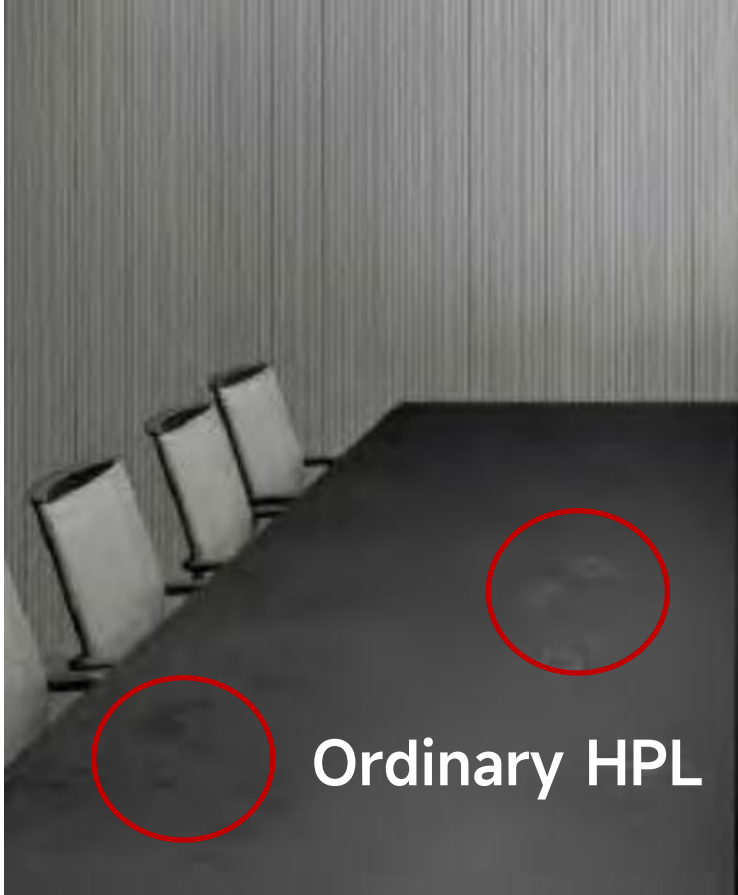
POST FORMING



SELF HEALING



PRODUCT FEATURES



PHYSICAL PROPERTIES

Item	Test Method	Unit	requirement	Test Result (Black)
Abrasion Resistance	GB/T 17657-2022 Sec. 4.45	Initial revolutions	≥ 150	500
		Post-test revolutions	≥ 350	2000
Scratch Resistance	GB/T 17657-2022 Sec. 4.42	N	—	0.8N, repairable with magic eraser
Moisture & Heat Resistance	GB/T 17657-2022 Sec. 4.50	Grade	≥ 3	Grade 4
Thermal Resistance	Internal Method (Ref. GB/T 17657-2022 Sec. 4.48, oil temp. 110°C)	—	—	110°C
Impact Resistance	GB/T 17657-2022 Sec. 4.53	Drop height (mm)	≥ 1000	1000
Stain Resistance	GB/T 17657-2022 Sec. 4.43	Grade	≥ 4	Grade 4
Glossiness	—	UG(60°)	$\leq 8^\circ$	1.8°

■■■ ANNUAL NEW COLORS



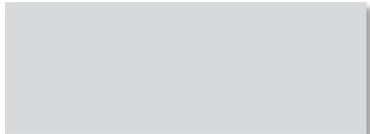
Annual
New Colors



36101
Celestial Coffee Brown



36102
Robe Grey



36138
Pale Cloud Grey

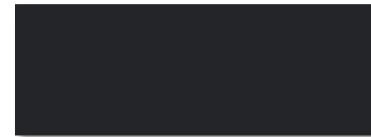
■ ■ ■ ANNUAL NEW COLORS



Annual
New Colors



36107
Nuance Purple



36123
Celestial Grey-Black

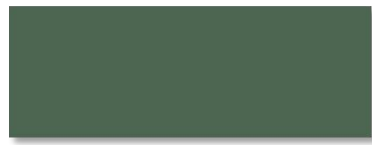


36110
Autumn Soft Grey

■■■ ANNUAL NEW COLORS



Annual
New Colors



36104
Conch Pearl Teal Gree



36144
Plumed Satin White



36137
Warm Lustrous Brown

■ ■ ■ ANNUAL NEW COLORS



Annual
New Colors



36136
Vermilion-Crimson Red



36112
Honey Cream Yellow



36106
Muted Teal Grey

■ ■ ■ ANNUAL NEW COLORS



Annual
New Colors



36100
Creamy Suet White



36109
Hazy Teal Green

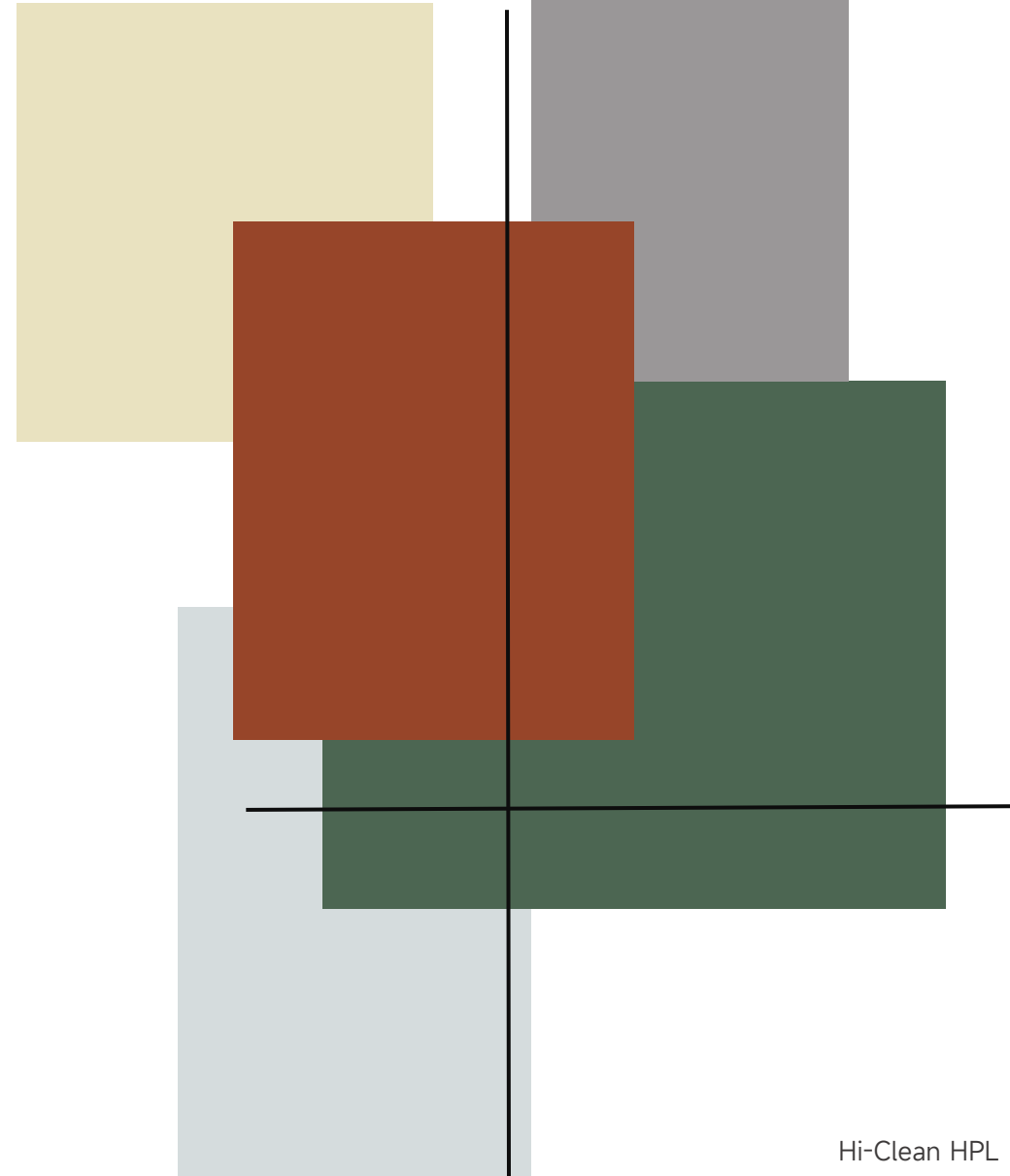


36103
Mineral Grey

■ ■ ■ Annual New Colors

Collection of colors

				
36100 Creamy Suet White	36144 Plumed Satin White	36102 Robe Grey	36123 Celestial Grey-Black	36138 Pale Cloud Grey
				
36110 Autumn Soft Grey	36112 Honey Cream Yellow	36103 Mineral Grey	36101 Celestial Coffee Brown	36109 Hazy Teal Green
				
36106 Muted Teal Grey	36104 Conch Pearl Gree	36137 Warm Lustrous Brown	36136 Vermilion-Crimson Red	36107 Nuance Purple



MAINTENANCE



Maintenance

1. Daily Cleaning: Wipe the surface with a clean, soft cloth.



2. Stain Removal: Use a diluted neutral detergent for stubborn stains, then gently wipe.



MAINTENANCE



1. Do not allow cigarettes to contact the surface for more than 5 seconds.



2. Avoid scratching the surface with sharp objects.



3. Avoid scratching the surface with high-temperature objects.



4. Do not clean the surface with corrosive cleaners.



PRODUCT APPLICATION

Countertops

Conference Table

Countertop

Cabinet Countertop

Vanity/Dressing Table

Bathroom Vanity



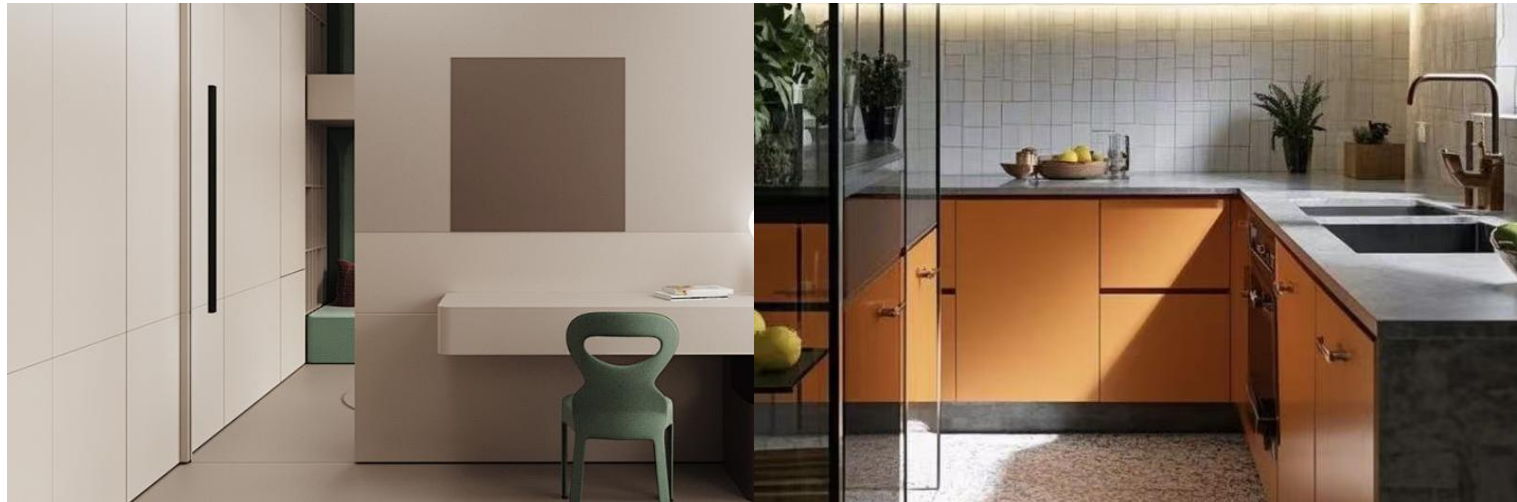
Cabinets

Storage Cabinet

Furniture

Display Cabinet

Wine Cabinet



■ ■ ■ PRODUCT APPLICATION



36136
Vermilion-Crimson Red

Application Scenarios

Cabinets, Countertops, Walls, Furniture

Living & Dining Areas

The cinnabar-crimson red display cabinet contrasts beautifully with the matte suet-like white walls, stirring an aesthetic storm in the serene space. This intense hue is not only the visual focal point but also infuses life with vivid charm.

PRODUCT APPLICATION



36123
Celestial Grey-Black

Application Scenarios

Desks, Conference Tables

Office Spaces

With minimalist strokes, it outlines modern office aesthetics. The unique skin-friendly texture and super matte surface let black return to its essence, serving as a silent declaration of modern style. It is not just a piece of furniture, but a calm yet powerful aesthetic footnote in the space.

PRODUCT APPLICATION



36144
Plumed Satin White

Application Scenarios

Cabinet Surfaces, Storage Units

Furniture

Plume satin white and celestial grey-black interpret modern minimalism through extreme contrast. Paired with an antibacterial and easy-to-clean surface, they not only safeguard the purity of the space but also jointly outline its visual tension—casting a quiet ambiance of modern wabi-sabi amid brightness and transparency.

PRODUCT APPLICATION



36107
Nuance Purple

Application Scenarios

Cabinet surface & Bathroom Vanity

Bathroom Vanity

The matte nuance purple and mineral grey meet elegantly, striking a color rhythm in the bathroom space. Endowed with waterproof, moisture-proof and antibacterial properties on its surface, daily washing becomes a calm and refined enjoyment, easily maintaining the cleanliness and elegance of the space.

PRODUCT APPLICATION



36109
Hazy Teal Green

Application Scenarios

Cabinet surface, Storage cabinet

Entryway Storage Cabinets

When a touch of fresh green meets the kitchen, art merges into life. Its outstanding anti-fingerprint and easy-to-clean properties are a smart guard for the kitchen, keeping this tidiness and beauty long-lasting, and carrying every expectation for a quality life.

REXIN

重塑装饰·重构 X 空间
REFORM DECO · REFORM X-SPACE

www.tianan.group

www.rexinnet.com

电话: +86-21-52562626

传真: +86-21-52562686

E-mail: marketing@rexinnet.com



Facebook



Instagram



RexinWebsite



GREENGUARD



GREENGUARD GOLD



DNV EC MED-B+D



GREENLABEL



ISO9001 & ISO14001



CARBON FOOTPRINT