

天安新材全资控股  
股票代码：603725.SH

**HPL耐火板·浙江瑞欣REXIN**

**REXIN**

重塑装饰·重构 X 空间

REFORM·DECO·REFORM X-SPACE

# REXIN COMPANY PROFILE

[WWW.REXINNET.COM](http://WWW.REXINNET.COM)

Shanghai·China

---





# Contents

● ABOUT REXIN

● PRODUCTS

● APPLICATIONS & CASES

# ABOUT REXIN



Founded in 1996, H/Q in Shanghai, Factory and R&D located in JIASHAN, Zhejiang Province

Focus on research and innovation, Awarded National High-Tech Enterprise

Become a leading High Pressure Laminate (HPL) manufacturer, 1<sup>st</sup> in China Developed & Launched Specialty HPL & Anti-Microbial TAIKA (Non-Combustible High Pressure Melamine Board)

In 2021, REXIN become a holding subsidiary of Guangdong Tianan New Material Co., Ltd., a Shanghai listed company, 603725.SH.

## INTERNATIONAL QUALITY

Conform to ISO9001, ISO14001, ISO45001 (OHSAS)

Conform to NEMA LD-3, BS EN438, ISO4586-2 Standards

Certified by UL GREENGUARD, GREENGUARD GOLD, Singapore Green Label

Certified by DNV EC MED-B+D & USCG APPROVAL



GREENGUARD



GREENGUARD GOLD



GREENLABEL



DNV EC MED-B+D



ISO14001



ISO9001  
ISO45001

## OUR PARTNERS

REXIN has business partners all over the world, and appreciates for their close cooperations, REXIN up scales and grows.

- OPPEIN、GOLDENHOME、BAILIAN GROUP
- CLIFFORD PROPERTY、COUNTRY GARDEN、CHINA RESOURCES
- VANKE、GREENLAND、TIMES PROPERTY
- YAMAHA、PEARL RIVER PIANO...



## OUR HISTORY

### 1996 ~ 2000



- Founded In Shanghai
- Shanghai Plant Built And Launched HPL Production
- Explored And Developed Overseas Market

### 2001 ~ 2005



- Awarded Shanghai High-Tech Enterprise
- Developed & Launched Postforming HPL & Compact As Well AS Chemical Resistant Laminate & Compact

### 2006 ~ 2010



- Relocated Shanghai plant To Zhejiang
- Successfully Introduced Interior Wall Panel Into Hospital Wall Segment Which Became The Mainstream Material For Wall Paneling Design In The Following 10 Years
- 1<sup>st</sup> In China Launched Autleaf Exterior Compact
- Sales Revenue Exceed 100 Million RMB

## OUR HISTORY

### 2011 ~ 2015

- 1<sup>st</sup> In China Launched Compact Met The Requirement Of Class B Fire Rated Conformed To Nftc Gb 8624-2012 Type Examination
- 1<sup>st</sup> In China Launched Compact Met The Requirement Of Class A Interior Wall & Ceiling Finish Category Under NFPA And IBC
- 1<sup>st</sup> In China Launched Non-combustible High Pressure Melamine Board (TAIKA Funen Board)
- 1<sup>st</sup> In China Launched Prefinished Veneer HPL
- 1<sup>st</sup> In China Launched Super Flexible HPL
- Sales Revenue Exceed 150 Million RMB



### 2016 ~ 2020

- Awarded National High-Tech Enterprise
- Obtained Invention Patent For Prefinished Veneer
- Compiled "Non-combustible Decorative Board" ZZB Standard
- Compiled "Inorganic Fiber Decorative Laminated Board " Industry Standard With Chinese Academy Of Forestry
- TAIKA Board Become The Best Option Under New Building Design Code, Widely Adopted In Wall Paneling Market
- Enriched Functional Products: Anti-microbial (Anti-bacterial & Anti-virus) TAIKA, Anti-odor Taika, Magnetic TAIKA, Bulletproof Board
- Developed & Launched Clean Touch+ Panel, Anti-finger print Hi-Clean HPL & AUTLEAF Outdoor series products
- Sales Revenue Exceed 200 Million RMB



## OUR HISTORY



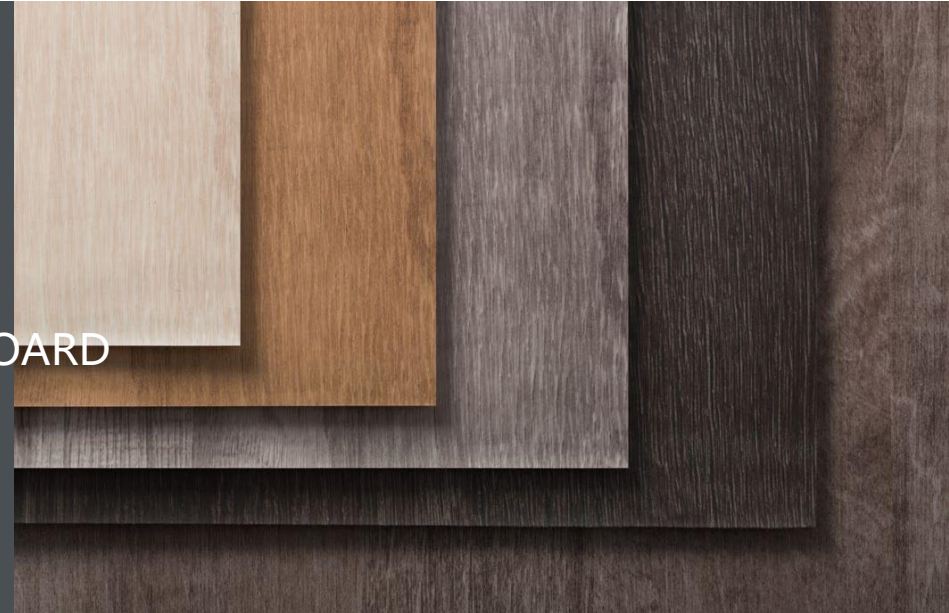
### 2021 ~ Now

- Become A Holding Subsidiary Of Guangdong Tianan New Material CO., LTD., A Shanghai Listed Company. Complementary Advantages, Mutual Empowerment, Industrial Synergy, Enable Strong Win-win Growth.
- Enriched Performance Products: VOC CUT TAIKA, Anti-Radiation TAIKA, etc.
- Developed & Launched Style Metal Laminate, Heat Resistant Non-combustible Chemical Resistant Board
- Sales Revenue Exceed 250 Million RMB

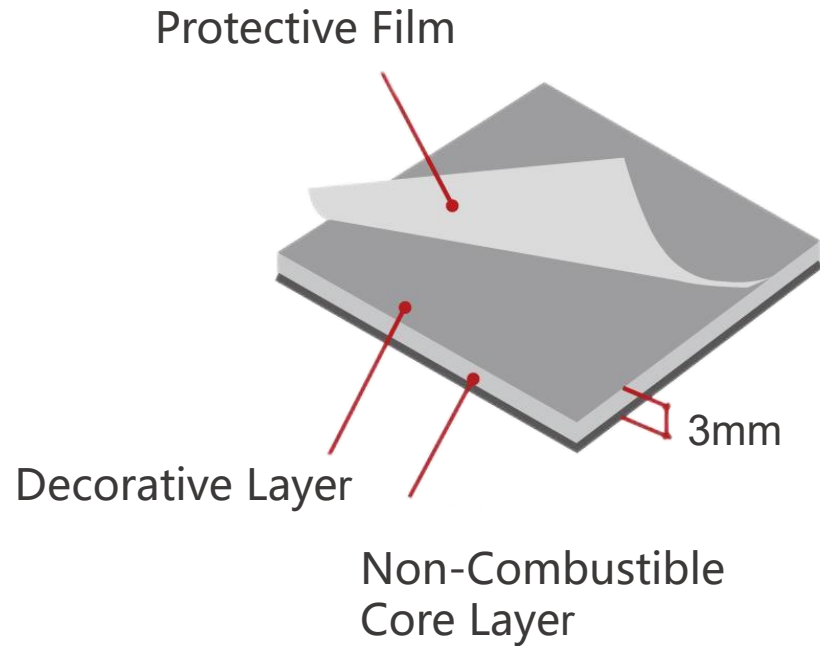
# ABOUT

## KEY PRODUCTS

- TAIKA -- NON-COMBUSTIBLE  
HIGH-PRESSURE MELAMINE BOARD
- HPL -- HIGH PRESSURE LAMINATE



## STRUCTURE



## PANEL SIZE:

- 1220mm\*2440mm (4'\*8')
- 1220mm\*3050mm (4'\*10')

### Thickness:

- 3mm for wall paneling
- 2mm for ceiling

# TAIKA ADVANTAGE



## LARGE

1220mm\*2440mm  
1220mm\*3050mm



## THIN

Thickness  
3mm



## LIGHT

Density  
1.75g/cm<sup>3</sup>



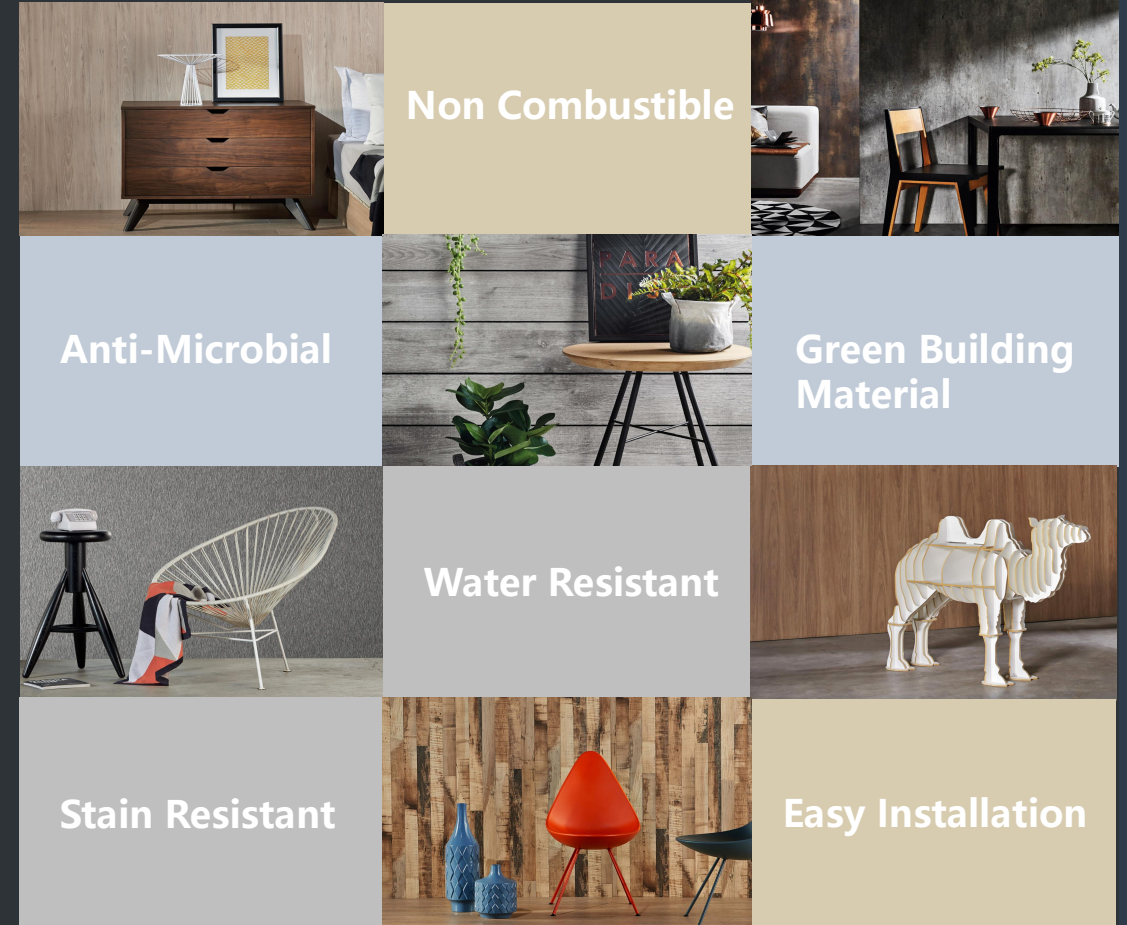
## BEAUTY

Trended Designs  
& Textures

# PRODUCT - TAIKA

## KEY FEATURES

- Non Combustible, Conform to NFTC GB 8624-2012 Class A2, JIS FUNEN, CNS 14705-1 Class 1, BS 476-6/7 Class 0, ASTM E84 Class A, AS/NZS 3837 Group 1;
- Anti-Microbial (Bacterial, Fungi, Virus), Conform to ISO 21702, JIS Z2801, ISO 22196, ASTM G21;
- Green Building Material, Conform to Low Formaldehyde, Low VOC, No Asbestos, No Radiation, Pass HEAVY METAL TCLP TEST;
- Light weight, Water Resistant, Stain Resistant;
- Quick & Easy Installation, Easy to Clean & Maintain;
- Proven Deodorizing, VOC CUT Functions ;
- Designed Acoustics Panels feature with right CAC & NRC;



## PRODUCT - TAIKA

### TRENDED DESIGN & TEXTURES



PATTERNS

WOODS

SOLIDS

STYLE METAL

ART LIBRARY

Fore more details, please refer to TAIKA Binder

## APPLICATIONS - TAIKA



Wall Paneling (common areas, lift lobby exterior, lift car interior etc.)



Bathroom Wall Coverings



Kitchen Splash Back



Designed Acoustics Ceiling & Wall Paneling

FOR MORE INFORMATION REGARDING TAIKA INSTALLATION METHODS (NEW SURFACES, EXISTING SURFACE), JOINT TREATMENTS, INSTALLATION ACCESSORIES, TECH SPECS, DESIGN COLLECTIONS AS WELL AS REXIN COMPANY CERTIFICATIONS, ETC., PLEASE CONTACT OUR SALES REP. at [EXPORTREXIN@163.COM](mailto:EXPORTREXIN@163.COM), WE ARE PLEASED TO SERVE YOU.

# PRODUCT - TAIKA

## TAIKA PRODUCT LINES

- ANTI-MICROBIAL TAIKA
- ANTI-RADIATION TAIKA
- ANTI-ODOR TAIKA
- VOC CUT TAIKA
- MAGNETIC TAIKA
- ART TAIKA



# PRODUCT - TAIKA

## ANTI-MICROBIAL TAIKA

### — Safety Guard

Certified by SGS and conform to ISO21702: 2019 (Anti-Virus) and JIS Z2801: 2012 (Anti-Bacterial) as well as ASTM G-21 (Anti-fungi), REXIN ANTI-MICROBIAL TAIKA can efficiently inhibit the activity of the microbial, which suitable for wall paneling, partitions where germs are easy to remain.

### KEY FEATURES:



Non Combustible, Conform To GB 8624-2012



Compact Structure & High Strength



Light weight, Water Resistant, Stain Resistant



E0 Free FMD Emission (Conform To GB/T39600-2021)



Rich & Trended Design Selections



Quick & Easy Installation, Easy To Clean & Maintain



Hospital of Beijing PLA

# PRODUCT - TAIKA

## ANTI-RADIATION TAIKA

— Best Partner In Medical Radiation Protection

REXIN Anti-Radiation TAIKA panel has the ability of absorbing and blocking radiation. It is especially suitable for the areas which require radiation protection such as facade, wall, partition, and ceiling for the Nuclear Medicine Department, Radiology Department, Dental Department, Operating Room, etc.



### KEY FEATURES:



Proven Anti-Radiation Function



Abrasion & Impact Resistance



Hygienic & Easy Installation



AntiMicrobial & Stain Resistance



Non Combustible

# PRODUCT - TAIKA

## ANTI-ODOR TAIKA

### — DE-ODOR & FMD CUT

The negative ions generated from the surface of the Anti-Odor TAIKA can improve the indoor air quality especially in the areas with relatively poor ventilation such as toilet and smoking room, via purifying the unpleasant smell resulting from the Formaldehyde, Ammonia etc.



### KEY FEATURES:



Proven Deodorizing Function, Conform To QB/T 2761-2006



Anti-Microbial (Bacterial, Fungi, Virus, Conform To IS021702, JIS Z2801, ASTM G-21)



Non Combustible, Conform To GB 8624-2012



E0 Free FMD Emission (Conform To GB/T39600-2021)

# PRODUCT - TAIKA



## VOC CUT TAIKA

— Safe, Long-lasting, Low Energy, Circularly Purifying Air

It is a new type of self-cleaning and environmentally friendly material. REXIN apply latest N-shaped semiconductor material and super-structured photo mineralization technology, which can continuously decompose VOC in the air into water, carbon dioxide and fresh air. Available with variety color options, it performs exceptionally well in wall and ceiling applications.

### KEY FEATURES:



Empowered By  
Visible Light



Low Energy Consumption



Harmless Decomposition



Easy To Clean &  
Maintain



Renewable



Circularly Purifying Air

# PRODUCT - TAIKA

## MAGNETIC TAIKA

### — Customized Magnetic Wall

REXIN Magnetic TAIKA is made of writable surface, magnetic layer and special core under high temperature and high pressure. Besides the merits of TAIKA itself, this product has therein one, combining magnetic adsorption, projection curtain and writing function, and can be applied on the functional wall paneling, creates an ideal space for communication and display for health care, office, retail, education sector, residential children room, etc.



### KEY FEATURES:



Healthy & Safe



Non Combustible



Anti-Bacteria & Anti-Virus

# PRODUCT - TAIKA

## ART TAIKA

REXIN ART TAIKA help realize the infinite imagination onto the wall decorations to create customized and exclusive art spaces.

### KEY FEATURES:



Non Combustible



Waterproof &  
Anti-Germ



Stylish Color Selections



Conform To E1 Formaldehyde  
Emission



Suzhou Singapore International School



# CASES

---

- TAIKA -- NON-COMBUSTIBLE HIGH-PRESSURE MELAMINE BOARD



## CASES - TAIKA



**Shanghai Jiahui  
International Hospital**

APPLICATION AREAS: Wall Paneling



**The First Hospital Of China  
Medical University**

APPLICATION AREAS: Wall Paneling



**The Military General Hospital  
Of Beijing Pla**

APPLICATION AREAS: Wall Paneling, Column

## CASES - TAIKA



### Zhejiang Provincial People's Hospital

APPLICATION AREAS: Doors, Wall Paneling



### Tongling People's Hospital

APPLICATION AREAS: Wall Paneling

### The People's Hospital Of Liaoning Province

APPLICATION AREAS: Wall Paneling



## CASES - TAIKA



**Beijing Puren Hospital**

APPLICATION AREAS: Wall Paneling, Column



**Beijing Aerospace Center Hospital**

APPLICATION AREAS: Wall Paneling, Column

## CASES - TAIKA



### Shanghai YAOHAN Mall

APPLICATION AREAS: Wall Paneling, Ceiling,  
Column



### Shanghai Huajing LongFor Paradise Walk

APPLICATION AREAS: Wall Paneling

## CASES - TAIKA



### CLIFFORD GROUP

APPLICATION AREAS: Wall Paneling, corridor, Interior Doors & Frames



# HIGH PRESSURE LAMINATE (HPL)

Rich Designs: **500+** Solids, Patterns, Woodgrain designs

Creative Surface Textures: **45+** beauty & pleasant touch

Enable designers, developers, and planners to develop, visualize and tailor solutions for interiors, transportation, hospitality, and commercial and public spaces with super performance

## PANEL SIZE:

---

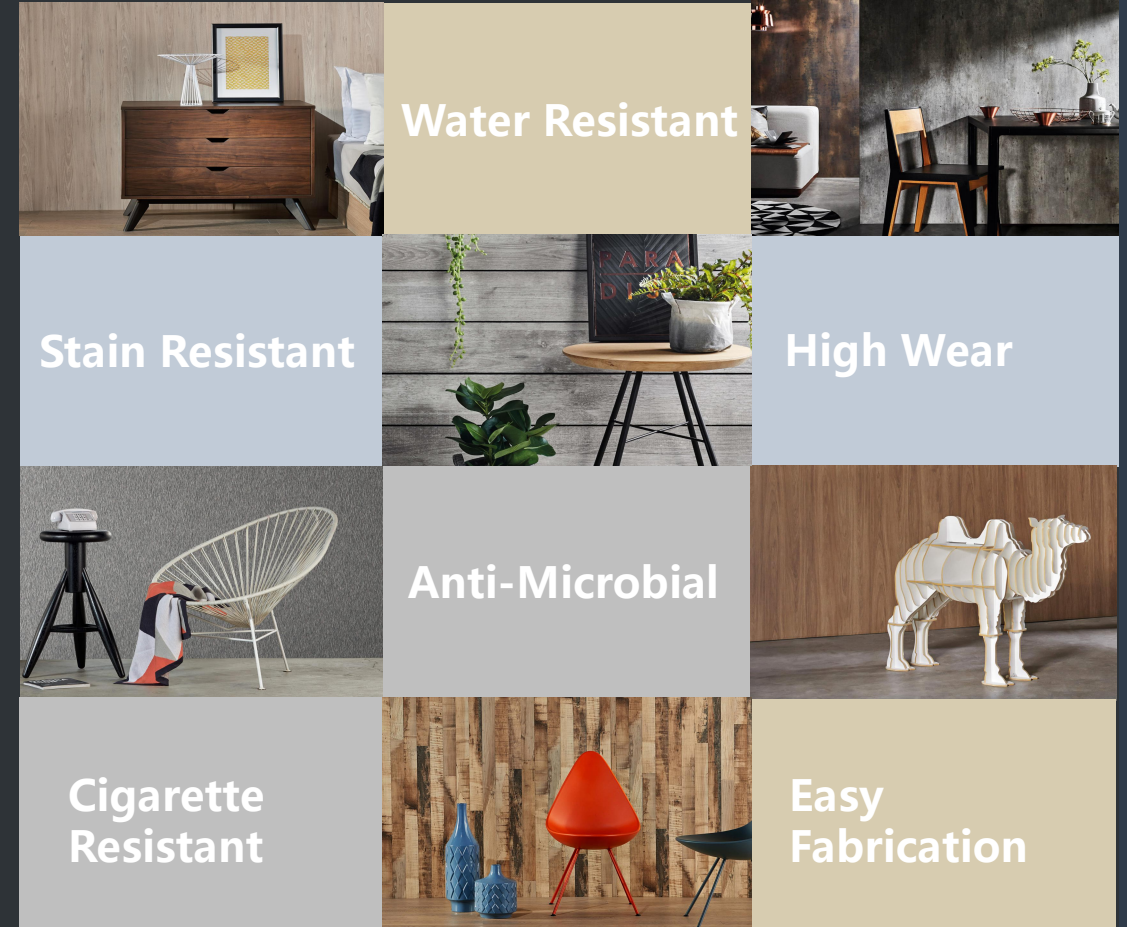
- 1220mm\*2440mm (4'\*8')
- 1220mm\*3050mm (4'\*10')
- 1525mm\*3050mm (5'\*10')
- 1525mm\*3660mm (5'\*12')

### Thickness:

- 0.15mm ~ 25mm

## KEY FEATURES

- **ULTRA SAFE:** Conform to Low Formaldehyde, Low VOC, No Asbestos, No Radiation, Pass TCLP;
- **SUPER DURABILITY:** High-Wear + High-Impact + Water Repellent + High-Heat + Strong Stain Resistant;
- **EXTRA PROTECTION:** Anti-Microbial (Bacterial, Fungi, Virus), Conform to ISO 21702, JIS Z2801, ISO 22196, ASTM G21;
- Easy Fabrication, Easy to Clean & Maintain;



## PRODUCT - HPL

### RICH & TRENDED DESIGN



PATTERNS

WOODS

SOLIDS

STYLE METAL

ART LIBRARY

Fore more details, please refer to REXIN HPL BINDER

# APPLICATIONS - HPL



Wall Paneling



Commercial Complex  
Chained Stores



Home Decoration  
Furniture



Outdoor Cladding  
Outdoor Furniture

(For more information, please contact us at [exporexin@163.com](mailto:exporexin@163.com) or +86-21-52562626)

## PRODUCT - HPL

### 25+ HPL PRODUCT LINES

- Antimicrobial HPL (Antibacterial, Antivirus)
- Fire Retardant HPL (Class 0)
- Class 1 Flame Retardant HPL
- Class 1 Non-Combustible HPL
- Outdoor HPL (AUTLEAF Exterior)
- Anti-fingerprint HPL (Hi-Clean+)
- Art HPL (Custom Laminate)
- Magnetic HPL (Writing Board)
- Pure Core HPL (Color Through)

.....



# PRODUCT - HPL

## KEY FEATURES:



Coordination Beauty



Customization



Convenient Processing,  
KD Installation

## SUPER FLEXIBLE HPL

### — HPL Breaking Through

REXIN Super Flexible HPL (High Pressure Laminate) is a specialty HPL, which was created to achieve tight radius cold forming while still keep the excellent performance of HPL.

# PRODUCT - HPL

## STYLE METAL

— Fresh & Creative

REXIN STYLE METAL, a perfect blending of three-dimensional creativity with the latest metal coloring conveys high-end precision and industrial beauty, with an extraordinary texture touched, which brings eye-catching beauty for the internal decorations.



## KEY FEATURES:



Creative Angel Cutting



Metallic Trendy



Scratch Resistant

## KEY FEATURES:



Anti-Fingerprint



Resistant To Dry Heat



Scratch Resistant (Micro Scratches Thermo-repairable)



Food-Safe



Shock Resistant

## ANTI-FINGER PRINT HPL (Hi-Clean)

— High Application, No Marks

Technology empowerment, high-tech smart materials, REXIN ANTI-FINGER PRINT HPL (Hi-Clean) with superior performance, micro scratches thermo-repairable, ideal for kitchens, bathrooms, furniture, healthcare, hotels, offices and those desired for fine decorations.



# PRODUCT - HPL

## REXIN HW OUTDOOR HPL

— High Wear Outdoor HPL

REXIN HW OUTDOOR HPL has the properties of high wear, scratch, impact and weather resistance. The products pass strict process requirements, and the materials are healthy and eco, create perfect outdoor finishing for you.



### KEY FEATURES:



Optimal Light Fastness & Extremely Weather Resistant



Stylish Design & Color, Wood Touch



Wear, Scratch & Impact Resistant



Stain Resistant, Easy Cleaning



Stable & Durable

# PRODUCT - HPL

## AUTLEAF FOR FACADES

### — Outdoor Materials & Design

REXIN AUTLEAF is laminated with special techniques that has super weather protection particularly suitable for long-lasting outdoor decorations such as Facades, Wayfinding Signs, Balcony Dividing Wall and Railings, etc.



### KEY FEATURES:



Optimal Light Fastness & Extremely Weather Resistant



Stylish Design & Color Selections



Easy Fabrication & Installation



Super Durability, Long Service Life, Long Maintenance Intervals



Conform To NFPA 862-2012 Class B1

# PRODUCT - HPL

## FR COMPACT

— Professional Interior Wall System

REXIN Interior Compact Panel is a high pressure decorative laminate of increased thickness that provides creative possibilities for fixtures and furniture in commercial, institutional & hospitality settings that stand up to heat and humidity.



TOYODA STADIUM, JAPAN



### KEY FEATURES:



Hygienic & Eco-Friendly



High Strength, Impact Resistance



Anti-Germ, Anti-termite, Stain resistant



Easy Installation, Detachable



Waterproof & Anti-Fungi



Fire Retardant



Easy To Clean & Maintain

## PRODUCT - HPL



### KEY FEATURES:



Fire Resistant



Patent Formula



Obtain China Green  
Material Certificate



Corrosion Resistance



Abrasion Resistance &  
Scratch Resistance



Waterproof & Anti-  
Germ

## CHEMICAL RESISTANT LAMINATE & COMPACT

— Laboratory Worksurface Expert

REXIN Chemical Resistant Laminate & Compact, with patented formula UV cured, super resistant to various harsh chemicals, REXIN Chemical Resistant Laminate proved to have world's leading performance, was certified as "The Key New Products of Shanghai" by Shanghai Science and Technology Information Institution

# PRODUCT - HPL

## NON-COMBUSTIBLE CHEMICAL RESISTANT BOARD

— New Lab Worksurface

REXIN integrates Chemical Resistant and Non-combustible board technology developed & launched Heat Resistant Non-Combustible Chemical Resistant Board.



### KEY FEATURES:



Non Combustible,  
Conform To GB  
8624-2012



SEFA-3 HARSH CHEMICAL  
RESISTANCE



High Temperature  
Resistance



Waterproof &  
Anti-Germ



Abrasion Resistance &  
Scratch Resistance



Hygienic & Eco-  
Friendly (Free FMD  
Emission Achieves  
ENF Grade)

# CASES

---

- HPL -- HIGH PRESSURE LAMINATE



## CASES - HPL



### CHAINED STORES - UMAMI

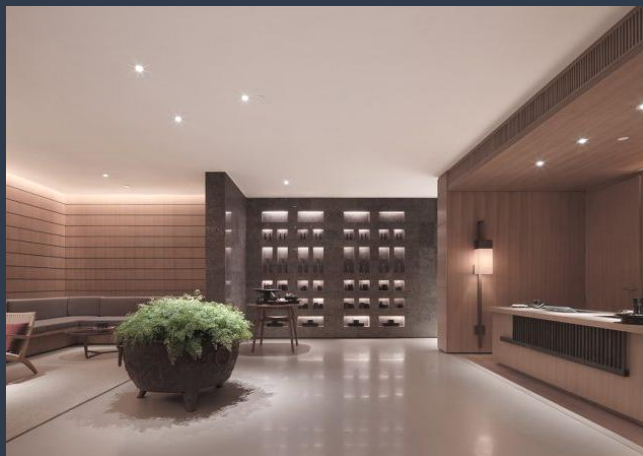
APPLICATION AREAS: Reception Tops



### Chained stores - Hotpot

Table tops, Furniture

## CASES - HPL



### Hospitality - Alila Hotel

APPLICATION AREAS: Wall Paneling & Furniture



### Times property

APPLICATION AREAS: Interior Doors & Door Frames

## CASES - HPL



### Villa in Florida, USA

APPLICATION AREAS: Wall Cladding



### Outdoor furniture

APPLICATION AREAS: Table tops

## OTHER PERFORMANCE PRODUCTS



### PREFINISHED STYLE VENEER

— Perfectly Preserving Veneer's Nature Beauty

Combining melamine impregnated wood veneers with advanced surface processing technology, Rixin Prefinished Style Veneer not only preserves its wonderful nature, but also enhances the performance under severe environment and longer service life which gains wider applications.

### KEY FEATURES:



E0 Free FMD Emission



Moisture-Proof And  
Sound-Absorbing



Anti-germ, Anti-termite,  
Stain Resistant



Fire Retardant



UV Resistant

# OTHER PERFORMANCE PRODUCTS

## IPIE PANEL

— Perfect Combination Of Temperament  
And Practicality

The beautiful edging of REXIN IPIE is made of designed color layers with strong sense of visual impact. The combination of temperament and practicality makes it perfect for creative interior decorations.



### KEY FEATURES:



Designed Beauty With  
Self-edging



Super Durability



Easy Fabrication, Easy  
Maintenance

# OTHER PERFORMANCE PRODUCTS

## CLEAN TOUCH

— From Nature While Better

REXIN Clean Touch has a strong sense of design and comfort, inspired by rare natural stone, forming via hot pressing with high temperature and pressure. Owing to its ultra-compact surfaces and various design options out beat Quartz, Granite, Solid Surfacing, Engineering stone as well as slate.



### KEY FEATURES:



High Temperature Resistance



Ultra Safe, No Radiation



High Hardness, Super Durability



Non-Porous, Stain Resistance



Food-Safe

## OTHER PERFORMANCE PRODUCTS



### REXIN OUTDOOR CLEAN TOUCH+

— Outperform Nature

Owing to its excellent physical, mechanical and weather resistance properties, REXIN OUTDOOR CLEAN TOUCH+ become an ideal material for Outdoor Table, Countertops, Entry Door, Bay Window Sill, Gateway Stone for Residential, Commercial Segments such as Restaurant, Hotel, Garden, Resort, Cafe Balcony, Patio, etc. Bring you a modern, eco, fashionable outdoor experience.

#### KEY FEATURES:



Optimal Light Fastness &  
Extremely Weather Resistant



Stylish Design & Color, Stone Touch



Wear & Scratch Resistant



Stable & Durable



Stain Resistant, Easy Cleaning

# OTHER PERFORMANCE PRODUCTS

## HPL-SPC FLOORING

— Antibacterial Protection, Safer

REXIN antibacterial flooring has the friendly texture of logs. The product has antibacterial, termite and mold resistant, wear-resistant, cigarette-resistant and scratch-resistant properties through strict process requirements, healthy and environmentally friendly, creating a perfect living space for you.




### KEY FEATURES:

 Super Wear, Impact and Scratch Resistance

 Waterproof & Anti-slip

 Healthy & Quiet

 Cigarette Resistance, Fire Retardant

 Anti-Termite & Mold

 Stain Resistant, Easy Cleaning

 Quick Installation, High Stability

# OTHER PERFORMANCE PRODUCTS

## KEY FEATURES:



Bulletproof



Crack Resistant



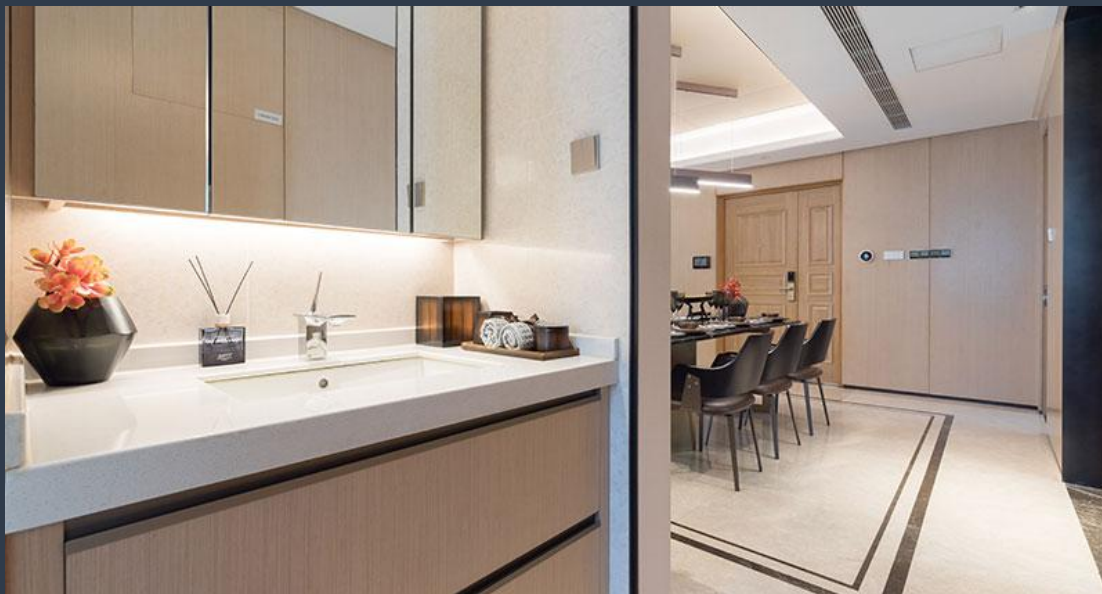
Easy Fabrication &  
Installation

## BULLETPROOF BOARD

— Lightweight & High Performance

It is made of special industrial bulletproof steel plate and fiber fabric according to strictly set mechanical data, with outstanding physical properties, to ensure the safety for life and property while with trended decoration effect.

## OTHER PERFORMANCE PRODUCTS



### RESISTOP

— Make Furniture Lighter

RESISTOP, a new specialty light weight product which out beat compact. It is especially suitable for designed furniture, retail fixtures, cabinet doors, partitions, table Tops, and chairs etc.

#### KEY FEATURES:



Light Weight, High Stability



Easy Fabrication, Self-Edging



High Strength, Impact Resistance



Anti-Germ, Anti-termite



Waterproof & Anti-Fungi

## OTHER PERFORMANCE PRODUCTS



### KEY FEATURES:



Designed Beauty



Optimal Light Fastness & Extremely Weather Resistant



Durable, Low Follow-up Costs



Easy Fabrication, Self-Edging

## LAMINWOOD

— High-End Outdoor New Material

REXIN Laminwood, a brand new outdoor green building material, conforming to BS1088 criteria for marine plywood, has higher stability with waterproof and anticorrosion, optimal light fastness and outstanding weather resistant while preserving wood nature.

# CASES

---

- OTHER PERFORMANCE PRODUCTS



## CASES - OTHER PERFORMANCE PRODUCTS



### Hospitality - Hampton

APPLICATION AREAS: Wall Paneling, Ceiling, Doors, Cabinets, Table tops

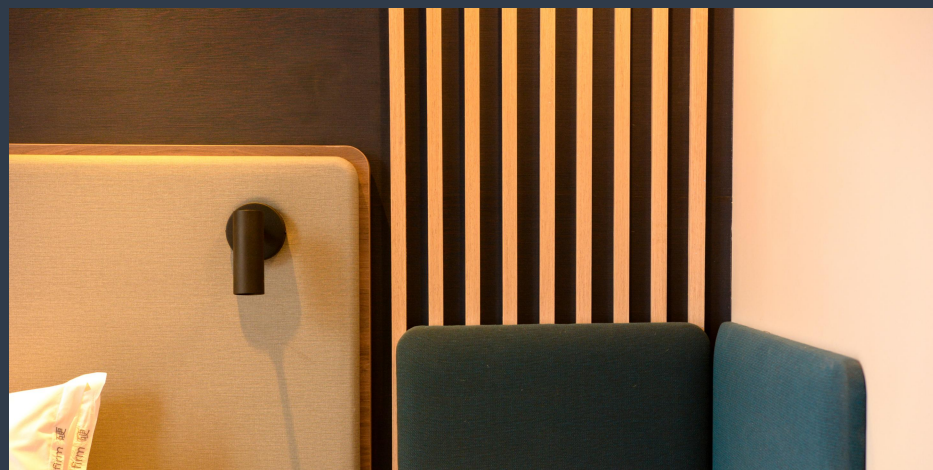
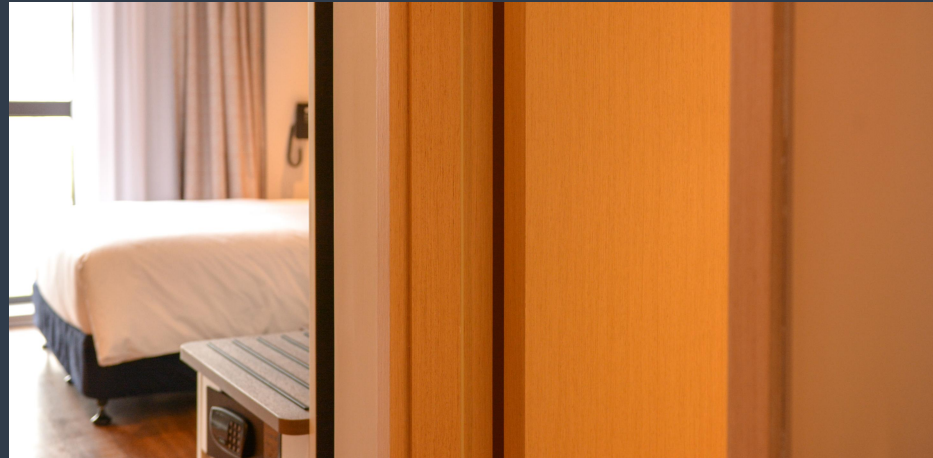


# CASES - OTHER PERFORMANCE PRODUCTS



## Holiday Inn Express

APPLICATION AREAS: Wall Paneling, Doors, Cabinets, Grille, Countertops, Corner Profiles





REXIN  
WEBSITE



REXIN  
WECHAT

[WWW.REXINNET.COM](http://WWW.REXINNET.COM)

